

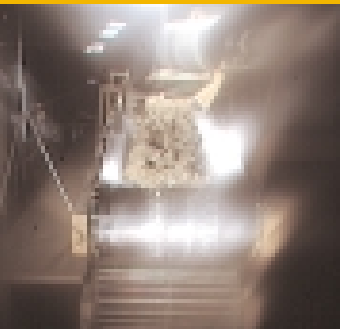
CONTIFLEX<sup>®</sup>  
RIP-PROTECT  
Textil-Fördergurte mit  
Schlitzschutz  
Slit-resistant Textile  
Conveyor Belts

Conveyor Belt Group



Fördergurte mit Schlitzschutz sind mit Zugträgern aus EP-Gewebeeinlagen ausgestattet. Die hochabriebfeste Deckplatte ist tragseitig mit einer speziellen Stahlseilquerarmierung versehen, die das Eindringen von Fremdkörpern und scharfkantigem Fördergut in den Festigkeitsträger deutlich erschwert.

These slit-resistant conveyor belts have tension members made of EP fabric plies. The highly wear-resistant upper layer of the top cover is provided with a special steel cable transverse reinforcement that inhibits sitting by sharp materials or foreign bodies.



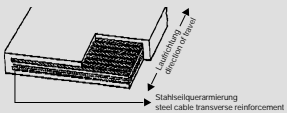
## CONTIFLEX® RIP-PROTECT mit Stahlseilquerarmierung in der Tragseite with steel cable transverse reinforcement in the top cover

### Bewährt im vielseitigen Einsatz

- Bauschuttrecycling
- Brecheranlagen ◦ Holzverarbeitung/Sägewerk
- Müllverwertung ◦ Recyclinganlagen
- Schrottverwertung ◦ Schotterindustrie

### Tried and tested in various applications

- Demolition waste recycling
- Feeder for crushing machinery ◦ Woodworking/sawmill
- Household garbage processing ◦ Recycling plants
- Scrap material processing ◦ Grave/ballast industry

Technische Daten		Technical data	
<b>Gurttyp</b> Ab Lager lieferbar (Zwischenverkauf vorbehalten)	<b>Belt type</b> Available from stock (subject to prior sale)	<b>CONTIFLEX® RIP-PROTECT EP 500/3</b>	
			
Deckplattendicke	Cover thickness	mm	5S + 2
Deckplattentyp	Cover type	-	hochabriebfest      highly wear-resistant
Gurtbreite	Belt width	mm	650/800/1000/1200
Gurtdicke ca.	Belt thickness approx.	mm	10
Gurtgewicht ca.	Belt weight approx.	kg/m <sup>2</sup>	13,5
Nennfestigkeit	Nominal strength	N/mm	≥ 500
Zahl der Einlagen	Number of plies	-	3
Trommeldurchmesser (Antrieb)	Pulley diameter (Drive)	mm	≥ 400
(Umlenk)	(Tail pulley)	mm	≥ 315
Muldungsfähigkeit (3-teilig)	Troughability (3 part) max.	in °	25/30/35/40
Bezugsdehnung 10% der Bruchkraft	Reference elongation at 10% of breaking load	%	≤ 15
Länge der rechtwinkligen Gurtverbindung	Length of right-angled belt splice	mm	450

Weitere Gurttypen, Gurtbreiten und Sonderausführungen nennen wir Ihnen auf Anfrage. Bei großen Achsabständen und gleichzeitiger hoher Beanspruchung durch scharfkantiges Fördergut sind auch die Gurttypen CONTIFLEX® IW/TW/SW vorteilhaft einsetzbar. Unsere Spezialisten in der Anwendungstechnik beraten Sie gern.

Other belt types, belt widths and special designs are available on request. CONTIFLEX® IW/TW/SW belts are suitable for systems that have large centre distances and convey sharp-edged material. Our specialists in application engineering are pleased to advise you.

ContiTech  
Transportbandsysteme GmbH  
Breslauer Straße 14  
D-37154 Northeim  
Phone +49 5551 702-207  
Fax +49 5551 702-504  
[www.contitech.de/transportbandsysteme](http://www.contitech.de/transportbandsysteme)



The content of this publication is provided for information only and without responsibility. ContiTech AG's obligations and responsibilities regarding its products are governed solely by the agreements under which they are sold. Unless otherwise agreed in writing, the information contained herein does not become part of these agreements. This publication does not contain any guarantee or agreed quality of ContiTech AG's products or any warranty of merchantability, fitness for a particular purpose and non-infringement. ContiTech AG may make changes in the products or services described at any time without notice. This publication is provided on an "as is" basis. To the extent permitted by law, ContiTech AG makes no warranty, express or implied, and assumes no liability in connection with the use of the information contained in this publication. ContiTech AG is not liable for any direct, indirect, incidental, consequential or punitive damages arising out of the use of this publication. Information contained herein is not intended to announce product availability anywhere in the world. © 2007 ContiTech AG. All rights reserved.